

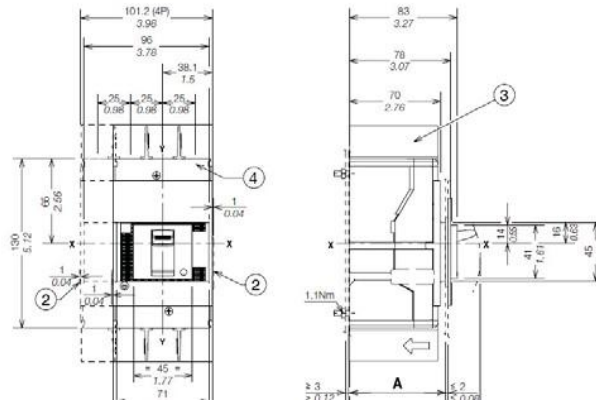
Прекъсвач АВВ мощностен автоматичен тип А-2 3Р, 160 А, 690 V, 3-25 kA, Tmax XT1B 160 TMD 160-1600 3p F F



Type of circuit-breaker	XT1		
Frame	125		
Poles	3,4		
Rated ultimate short-circuit breaking capacity, Icu	N	S	H
(AC) 50-60 Hz 240 V	[kA] 50	65	100
(AC) 50-60 Hz 480 V	[kA] 25	35	65
(AC) 50-60 Hz 600Y/347 V	[kA] 18	22	25
(AC) 50-60 Hz 600 V	[kA] -	-	-
(DC) 250 V-2 poles in series	[kA] 35	42	50
(DC) 500 V-3 poles in series	[kA] -	-	-
(DC) 500 V-4 poles in series	[kA] 35	50	50
(DC) 600 V-3 poles in series	[kA] -	-	-
Trip units:			
Thermomagnetic	TMF (Fixed threshold)	•	
	TMA (fully adjustable)	•	
Magnetic only	MA (Magnetic only adjustable)	•	
Electronic	Ekip LS/I	-	
	Ekip I	-	
	Ekip LSI	-	
	Ekip LSIG	-	
	Ekip E-LSIG	-	

Caption

- ① Insulating plate obligatory
- ② Overall dimension of optional wiring ducts
- ③ 25mm insulating barriers between phases (compulsory) provided
- ④ Front carter obligatory for through door of the panel $\leq 25\text{mm}/0,98''$



Продукт: [Прекъсвач АВВ мощностен автоматичен тип А-2 ЗР, 160 А, 690 V, 3-25 kA, Tmax XT1B 160 TMD 160-1600 Зр F F](#)

Категория: [Мощностни автоматични прекъсвачи](#)

Бранд: [АВВ](#)

Категория бранд: [Прекъсвач АВВ](#)

Ташев-Галвинг ООД
www.tashev-galving.com

Power and productivity
for a better world™

